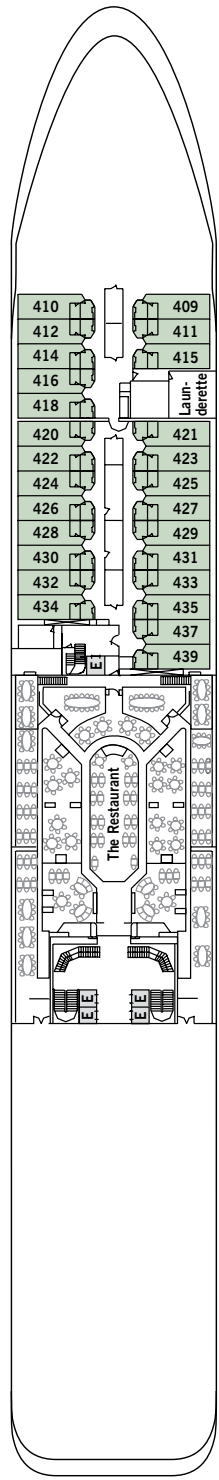
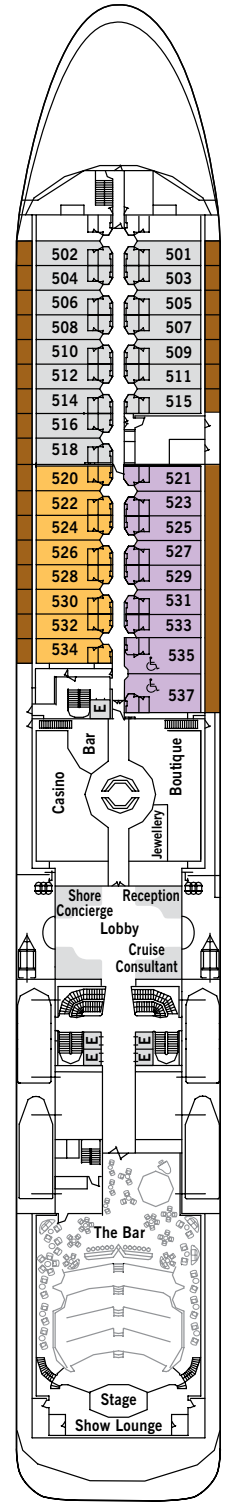


# Silver Whisper – DECK PLAN



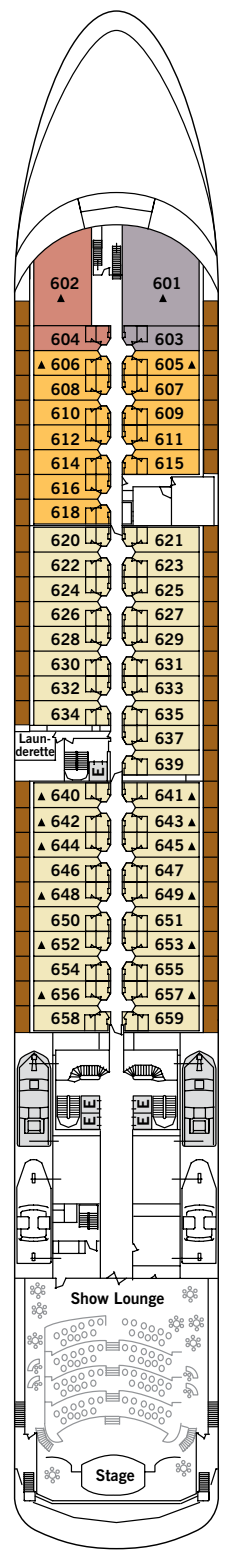
**DECK 4**

The Restaurant



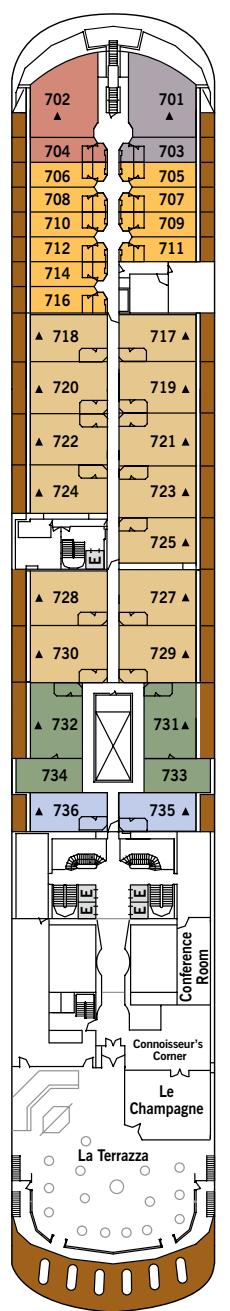
**DECK 5**

The Casino  
The Bar  
Boutiques  
Reception/Guest Relations  
Shore Concierge  
The Show Lounge



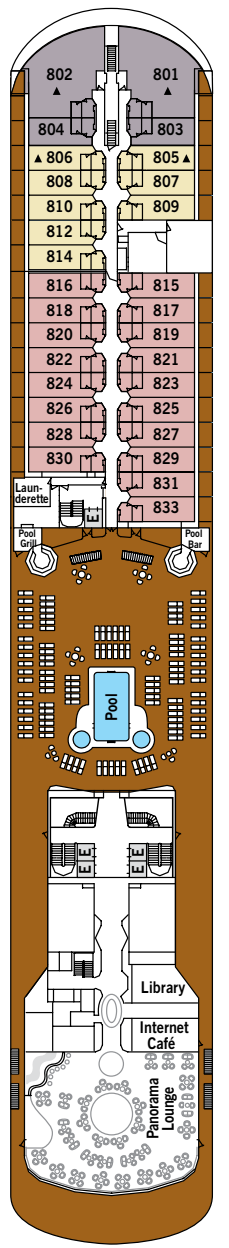
**DECK 6**

The Show Lounge



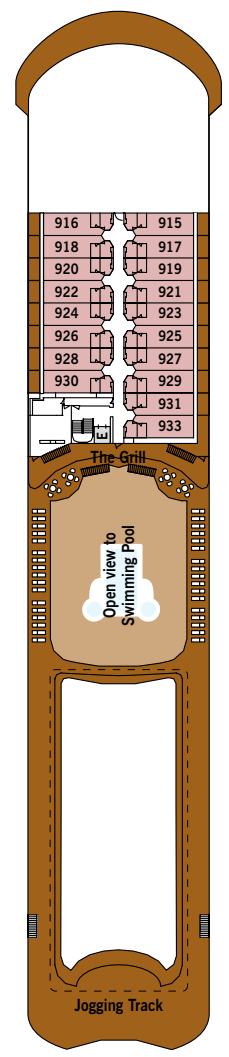
**DECK 7**

La Terrazza  
Le Champagne  
The Connoisseur's Corner  
Conference/Card Room



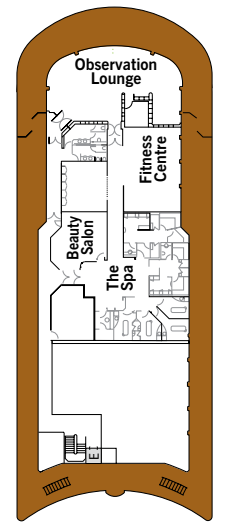
**DECK 8**

Pool  
Pool Bar  
The Pool Grill  
The Library  
Internet Café  
The Panorama Lounge



**DECK 9**

Jogging Track  
The Grill



**DECK 10**

The Fitness Centre  
The Spa at Silversea  
Beauty Salon  
The Observation Lounge

## SUITE CATEGORIES

- Owner's Suite . . . . . ●
- Grand Suite . . . . . ●
- Royal Suite . . . . . ●
- Silver Suite . . . . . ●
- Medallion Suite . . . . . ●
- Veranda 4. . . . . ●
- Veranda 3. . . . . ●
- Veranda 2. . . . . ●
- Veranda 1. . . . . ●
- Terrace Suite . . . . . ●
- Vista Suite . . . . . ●

## SPECIFICATIONS

- Crew . . . . . 302
- Officers . . . . . European
- Guests . . . . . 382
- Tonnage . . . . . 28,258
- Length . . . . . 610 Feet/186 Metres
- Width . . . . . 81.8 Feet/24.9 Metres
- Speed . . . . . 18.5 Knots
- Passenger Decks . . . . . 7
- 3rd Guest Capacity . . . . . ▲
- Connecting Suites  
416/418, 511/515, 516/518, 616/618
- Handicap Suites . . . . . 535,537
- Built . . . . . 2001
- Registry . . . . . Bahamas

# Silver Whisper – SUITE DIAGRAMS

All suites feature:

- Butler service
- Refrigerator and bar setup stocked with your preferences
- European bath amenities
- Pratesi fine bed linens and down duvet covers
- Premium mattresses
- A choice of pillow
- Plush robes and slippers
- Personalised stationery
- Binoculars
- Umbrella
- WiFi Internet access (fee applies)



## OWNER'S SUITE

Available as a one-bedroom configuration or as two-bedrooms (as illustrated) by adjoining with a Vista Suite.

1 BEDROOM: 919 SQ. FT. / 85 M<sup>2</sup>  
INCLUDING VERANDA (220 SQ. FT. / 20 M<sup>2</sup>);

2 BEDROOM: 1,264 SQ. FT. / 117 M<sup>2</sup>  
INCLUDING VERANDA (220 SQ. FT. / 20 M<sup>2</sup>)

- Large teak veranda with patio furniture and floor-to-ceiling glass doors; two bedroom has additional large picture window
- Living room with sitting area; two-bedroom has additional sitting area
- Separate dining area and bar
- Twin beds or queen-sized bed; two-bedroom has additional twin beds or queen-sized bed
- Marbled bathrooms with double vanity, separate shower and full-sized whirlpool tub, plus a powder room; two-bedroom has additional marbled bathroom with full-sized bath
- Walk-in wardrobe(s) with personal safe
- Vanity table(s) with hair dryer
- Writing desk(s)
- Flat screen television(s) with DVD and satellite reception
- Bang & Olufsen audio system
- Illy Espresso machine
- Radio/Alarm with iPod docking station
- Direct-dial telephone(s)



## GRAND SUITE

Available as a one-bedroom configuration or as two bedrooms (as illustrated) by adjoining with a Veranda Suite.

1 BEDROOM: 941-1,090 SQ. FT. / 87-101 M<sup>2</sup>  
INCLUDING VERANDA (103-116 SQ. FT. / 10-11 M<sup>2</sup>);

2 BEDROOM: 1,286-1,435 SQ. FT. / 119-133 M<sup>2</sup>  
INCLUDING VERANDA (163-176 SQ. FT. / 16-17 M<sup>2</sup>)

- Large teak veranda with patio furniture and floor-to-ceiling glass doors; two-bedroom has additional veranda
- Living room with sitting area; two-bedroom has additional sitting area
- Separate dining area and bar
- Twin beds or queen-sized bed; two-bedroom has additional twin beds or queen-sized bed
- Marbled bathrooms with double vanity, separate shower and full-sized whirlpool tub, plus a powder room; two-bedroom has additional marbled bathroom with full-sized bath
- Walk-in wardrobe(s) with personal safe
- Vanity table(s) with hair dryer
- Writing desk(s)
- Flat screen television(s) with DVD and satellite reception
- Bang & Olufsen audio system
- Illy Espresso machine
- Radio/Alarm with iPod docking station
- Direct-dial telephone(s)



## ROYAL SUITE

Available as a one-bedroom configuration or as two bedrooms (as illustrated) by adjoining with a Veranda Suite.

1 BEDROOM: 967-1,007 SQ. FT. / 90-94 M<sup>2</sup>  
INCLUDING VERANDA (110-116 SQ. FT. / 10-11 M<sup>2</sup>);

2 BEDROOM: 1,312-1,352 SQ. FT. / 122-126 M<sup>2</sup>  
INCLUDING VERANDA (170-176 SQ. FT. / 16-17 M<sup>2</sup>)

- Large teak veranda with patio furniture and floor-to-ceiling glass doors; two-bedroom has additional veranda
- Living room with sitting area; two-bedroom has additional sitting area
- Separate dining area and bar
- Twin beds or queen-sized bed; two-bedroom has additional twin beds or queen-sized bed
- Marbled bathrooms, with double vanity, separate shower and full-sized whirlpool tub, plus a powder room; two-bedroom has additional marbled bathroom with full-sized bath
- Walk-in wardrobe(s) with personal safe
- Vanity table(s) with hair dryer
- Writing desk(s)
- Flat screen television(s) with DVD and satellite reception
- Bang & Olufsen audio system
- Illy Espresso machine
- Radio/Alarm with iPod docking station
- Direct-dial telephone(s)

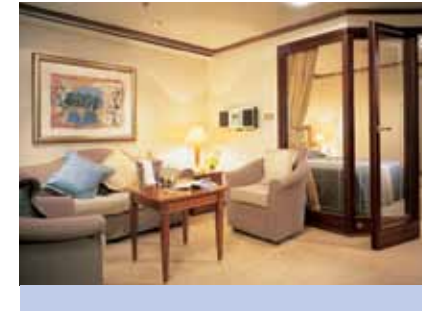


## SILVER SUITE

Silver Suites accommodate three guests.

653-701 SQ. FT. / 61-65 M<sup>2</sup>  
INCLUDING VERANDA (110-123 SQ. FT. / 10-11 M<sup>2</sup>)

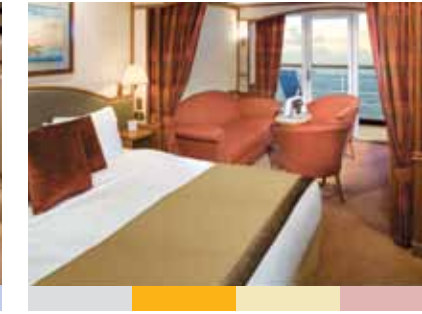
- Teak veranda with patio furniture and floor-to-ceiling glass doors
- Living room (with convertible sofa to accommodate an additional guest)
- Sitting area
- Separate dining area
- Twin beds or queen-sized bed
- Marbled bathroom with double vanity, full-sized bath, separate shower
- Walk-in wardrobe with personal safe
- Vanity table with hair dryer
- Writing desk
- Flat screen television(s) with DVD and satellite reception
- Bang & Olufsen audio system
- Radio/Alarm with iPod docking station
- Direct-dial telephone(s)



## MEDALLION SUITE

521 SQ. FT. / 49 M<sup>2</sup>  
INCLUDING VERANDA (81 SQ. FT. / 8 M<sup>2</sup>)

- Teak veranda with patio furniture and floor-to-ceiling glass doors
- Living room with sitting and dining area
- Twin beds or queen-sized bed
- Marbled bathroom with double vanity, full-sized bath, separate shower
- Walk-in wardrobe with personal safe
- Vanity table with hair dryer
- Writing desk
- Flat screen television with DVD and satellite reception
- Radio/Alarm with iPod docking station
- Direct-dial telephone



## VERANDA 1 - 4

Some Veranda Suites accommodate three guests. Veranda 3 and Veranda 4 offer preferred central location with identical accommodations to Veranda 1 and Veranda 2

345 SQ. FT. / 32 M<sup>2</sup>  
INCLUDING VERANDA (60 SQ. FT. / 6 M<sup>2</sup>)

- Teak veranda with patio furniture and floor-to-ceiling glass doors
- Sitting area
- Twin beds or queen-sized bed
- Marbled bathroom with double vanity, full-sized bath, separate shower
- Walk-in wardrobe with personal safe
- Vanity table with hair dryer
- Writing desk
- Flat screen television with DVD and satellite reception
- Radio/Alarm with iPod docking station
- Direct-dial telephone(s)



## VISTA SUITE/ TERRACE SUITE

287 SQ. FT. / 27 M<sup>2</sup>

- Large picture window providing panoramic ocean views (Vista Suite)
- Shared teak veranda and floor-to-ceiling glass doors (Terrace Suite)
- Sitting area
- Twin beds or queen-sized bed
- Marbled bathroom with double vanity, full-sized bath, separate shower
- Walk-in wardrobe with personal safe
- Vanity table with hair dryer
- Writing desk
- Flat screen television with DVD and satellite reception
- Radio/Alarm with iPod docking station
- Direct-dial telephone

